

## Off-Grid Adventure: Northern Lights at Yellow Dog Lodge

2 Nights | 3 Days

Yellowknife, NT

Validity: Aug – Oct 2024 & 2025

DM - UQYZFYLDGRD

This tour is fully customizable and is subject to availability.

Discover the Remote Wilderness Lodge of Yellow Dog in Canada's Northwest Territories. Experience exclusive Aurora Borealis viewing in pristine nature. Explore boreal forests by day and witness the dancing Northern Lights by night. This off-grid adventure offers comfort amidst rugged beauty, perfect for creating unforgettable memories. Disconnect from the world and reconnect with nature in solitude. Ideal for families, friends, or romantic getaways.

**Book now for a truly immersive wilderness experience!**



### Highlights

- Experience exclusive Northern Lights viewing in pristine wilderness
- Explore untouched boreal forests and serene landscapes
- Disconnect from modern life in a sustainable, off-grid retreat
- Create lasting memories with loved ones in a cozy, intimate setting
- Capture stunning Aurora Borealis photos in crystal-clear night skies
- Immerse yourself in the solitude and tranquillity of Canada's North

Book your Remote Wilderness Lodge adventure now for an unforgettable escape!

**Note:** This tour requires clients to be in possession of travel insurance.

For enquiries & bookings, please contact us at

Phone: +1 416 425 8001

E-mail: [sales@dmci.ca](mailto:sales@dmci.ca)

[www.dmci.ca](http://www.dmci.ca)

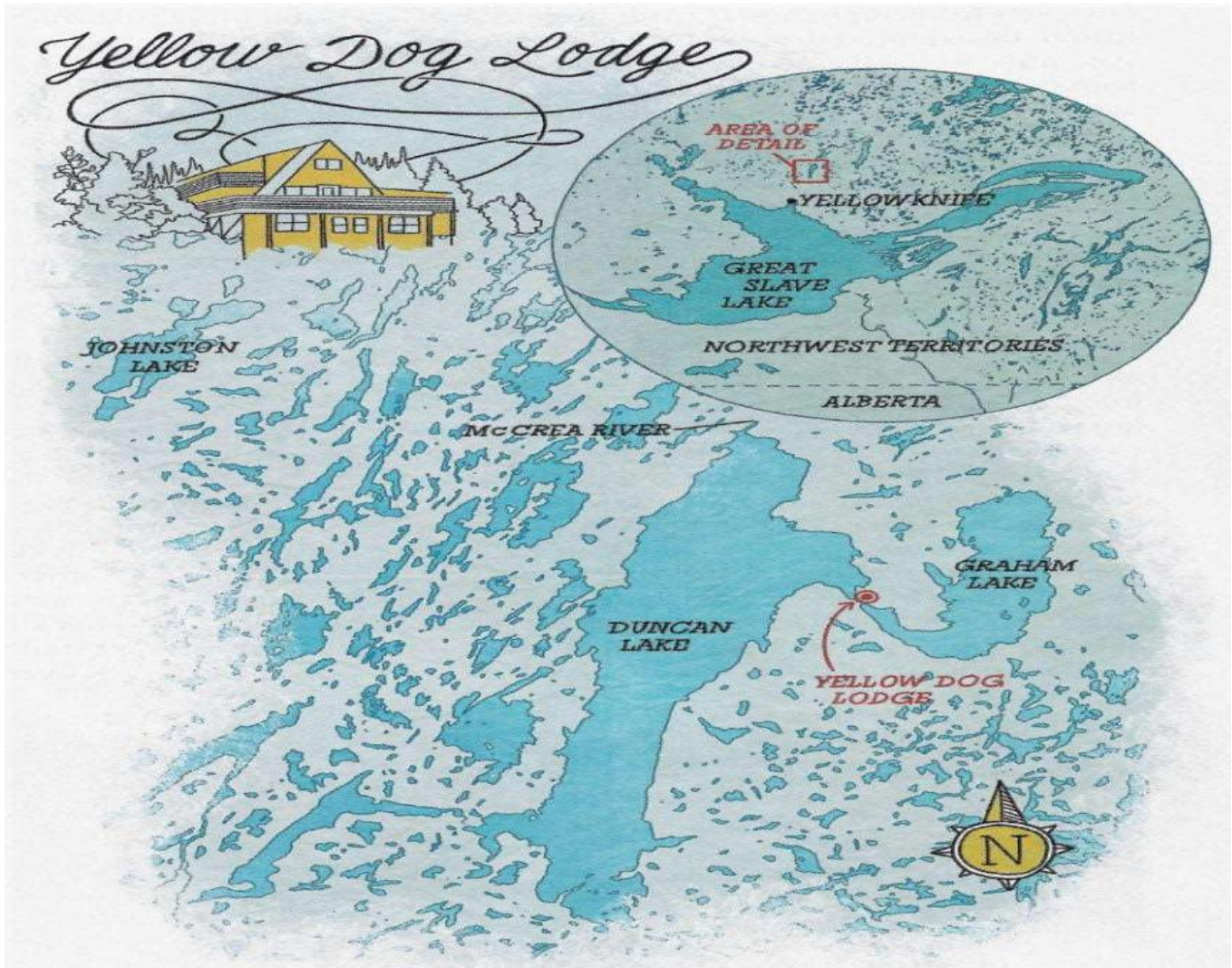
### Includes

- ✓ 2 nights accommodations.
- ✓ Return air charter by float plane from Yellow Knife to Yellow dog lodge (approx. 20 mins).
- ✓ Meals on full board basis.
- ✓ Housekeeping and linen.
- ✓ Complimentary tea, coffee, hot chocolate & home baked snack.
- ✓ Taxes, GST.

2074 Steeles Avenue E, Unit 1 & 2, Brampton, ON, Canada, L6T 4Z9

Phone: +1 416 425 8001 | E-mail: [sales@dmci.ca](mailto:sales@dmci.ca)

[www.dmci.ca](http://www.dmci.ca)



**Tariff 2024**  
 No Roads Here - Standard Lodge Rooms (2 Nights)

				12 to 15 Youth	5 to 11 Child
Single	Twin	Triple	Quad		
CA \$2169	CA \$1629	CA \$1629	#VALUE!	CA \$819	CA \$819
US \$1649	US \$1239	US \$1239	#VALUE!	US \$619	US \$619
AU \$2489	AU \$1869	AU \$1869	#VALUE!	AU \$939	AU \$939

2074 Steeles Avenue E, Unit 1 & 2, Brampton, ON, Canada, L6T 4Z9  
 Phone: +1 416 425 8001 | E-mail: sales@dmci.ca  
 www.dmci.ca



**Tariff 2024**  
 No Roads Here - Standard Private Cabins (2 Nights)

				12 to 15	5 to 11
Single	Twin	Triple	Quad	Youth	Child
CA \$2509	CA \$1889	CA \$1889	#VALUE!	CA \$949	CA \$949
US \$1919	US \$1439	US \$1439	#VALUE!	US \$719	US \$719
AU \$2889	AU \$2169	AU \$2169	#VALUE!	AU \$1089	AU \$1089

**Tariff 2024**  
 No Roads Here - Deluxe Executive Cabin (2 Nights)

				12 to 15	5 to 11
Single	Twin	Triple	Quad	Youth	Child
CA \$2859	CA \$2139	CA \$2139	CA \$2139	CA \$1079	CA \$1079
US \$2179	US \$1639	US \$1639	US \$1639	US \$819	US \$819
AU \$3279	AU \$2469	AU \$2469	AU \$2469	AU \$1239	AU \$1239

Note:  
 All children under 16 years of age receive 50% off the adult rate.  
 There is no charge applicable for children under 5 yrs.

**No Roads Here – Description:**

- Exclusive Northern Lights viewing in pristine wilderness
- Explore breathtaking boreal forests by day
- Capture stunning Aurora photos in clear night skies

Experience an unparalleled Aurora Borealis adventure at Yellow Dog Lodge, nestled in Canada's Northwest Territories. Just a short flight from Yellowknife, this remote wilderness lodge offers a perfect blend of comfort and rugged beauty. Guests enjoy two nights of exclusive access to some of the clearest skies for Northern Lights viewing.

During the day, visitors can explore the pristine boreal forest, taking in the breathtaking fall colors or serene winter landscapes. As night falls, the sky comes alive with the dancing lights of the Aurora, providing unforgettable moments and stunning photography opportunities.

The lodge's off-grid, sustainable design allows guests to disconnect from the world and reconnect with nature. With no other camps nearby, the solitude and silence of the North create a truly immersive experience. Whether traveling with family, friends, or a loved one, Yellow Dog Lodge offers the perfect setting for creating lasting memories in the heart of the Canadian wilderness.

**Exclusions**

- × Airfare. Offered as a supplement on request.
- × Park Fees.
- × Travel Insurance is strongly recommended to all travelers. Travel Agents, please note - If your client chooses to decline your offer to sell them Travel Insurance, you must secure a signed Liability Waiver, as required by the TICO, the Provincial Travel Regulatory Authorities of Ontario, Canada. DMCi Inc. sells Travel Insurance to residents of Ontario who are Canadian citizens or landed immigrants (Permanent Residence Card Holders) only. Non-Canadians and non-residents of Ontario or international clients must purchase Travel Insurance in their respective province, state, or country of residence.
- × Visa and Documentation Fees.
- × Any personal expenses.
- × Additional guided sports fishing, snowmobile & boating tours are available at a supplementary cost.
- × Guide fee additional charges Full day CAD 409/- & half day CAD 209/-
- × Additional aviation fuel charges fluctuate and are not included in the package rate. Fuel charges are invoiced at cost. Please estimate CAD 100/-- per person
- × Gratuities for Guides (expected).
- × Stay for one night in Yellowknife is highly recommended in order to connect your bush flight to Yellow Dog.
- × Overnight stay in Yellowknife.

**Room Descriptions:**

**STANDARD LODGE ROOMS:** - Maximum 3 persons

2 beds available in a double room

3 beds available in a triple room

Ensuite rooms with private bath. Showers available in common areas

**STANDARD PRIVATE CABINS:** Maximum 4 persons

3 beds – 1 queen and 2 single beds

Good for small families of 4

Full bathroom and shower

## Activity & Soft Adventure - Canada



### EXECUTIVE DELUXE ROOMS – Maximum 6 persons

Upstairs loft- 1 king bed, 2 twin beds, crib/1 single cot with a kitchen and living area.

Full bath and laundry room

Downstairs living area- twin day beds, twin pull out sofa.

(Three weeks notice is required when booking these cabins.)

### **Validity:**

15<sup>th</sup> August – 7<sup>th</sup> October

### **Deposit & Payment Policy**

- 30% deposit is required at the time of booking.
- Full payment is due 30 days prior to arrival date.

### **Change & Cancellation Policy**

- Deposit is refundable if cancelled within 24hours of booking. After 24 hours deposit paid is non-refundable.
- In an emergency cancellation refund/credit will be reviewed on a case-to-case basis.
- 100% penalty will be applicable for cancellations within 30 days.
- No Show – 100% non-refundable.
- Unused Services - non-refundable.

### **Suggested Gratuities/Tipping**

Kitchen & Housekeeping staff – CAD 30 per guest/day

Guide for guided tours – CAD 100 per guest

Tipping is considered optional, but the accepted practice is 10% of the total invoice based on customer experience

2074 Steeles Avenue E, Unit 1 & 2, Brampton, ON, Canada, L6T 4Z9

Phone: +1 416 425 8001 | E-mail: sales@dmci.ca

www.dmci.ca

---

## **FREQUENTLY ASKED QUESTIONS (FAQ)**

### **Is this tour customizable?**

Yes. This tour is 100% customizable. You may increase or reduce the number of days. Change the itinerary to suit your idea of the tour.

### **Is this tour an Escorted Tour with a Tour Director?**

No. This is not an Escorted Tour with a Tour Director. Some services offered on an escorted tour such as check-in assistance by a dedicated Tour Director, etc. are therefore not offered on our Independent Tours. Commentary on sightseeing tours will be either a pre-recorded commentary or narrated by your driver-guide in English.

### **Are there fixed dates of departure for this package?**

**No,** our package doesn't have just a few specific days when it leaves. It leaves every day during the season, so you can pick any day you like to start your adventure, subject to availability.

**Is it necessary to sign a Waiver to participate in your tours?** In most cases, signing a Waiver is not required. However, if your tour package includes a tour component that is considered a soft adventure activity, you will be obliged to sign a Liability Waiver issued by the operator of that particular tour or activity. This requirement will be clearly indicated on your tour voucher. Additionally, for all participants under the age of 18, a parent or legal guardian must sign the Waiver on their behalf.

### **Are there any specific dress code requirements for participating in the tours?**

There is no formal dress code for our tours. However, we do request that clients dress modestly and appropriately according to the local weather conditions. For soft-adventure tours, there are strict dress code guidelines that must be followed for safety purposes. These specific requirements will be communicated to you at the time your tour is confirmed.

**Can we expect to see wildlife on these tours?** While there is always a chance to spot wildlife during our tours, and such sightings are not uncommon, we must clarify that seeing wildlife is not a guaranteed aspect of our tours. Our guides possess extensive knowledge about the animals in the park and will gladly share information about them, should you see any wildlife or have questions about the local fauna.

## Activity & Soft Adventure - Canada



**Is it safe to approach or touch wild animals based on their behavior?** Absolutely not. Under no circumstances should you approach, touch, or exit your vehicle to photograph wild animals, regardless of their apparent calmness or friendliness. Interacting with wild animals poses significant risks to both humans and the animals themselves.

What are your open session dates?

**Summer Activity – Jun 18<sup>th</sup> to Sep 30<sup>th</sup>** - Sports Fishing, Aurora appreciated Northern lights, Glamping (Tent camping Flight seeing, Paddling – Canoes, Kayaks, peddle boats, paddle board or float tube, Hiking

**Winter Activity- Mar 01 to Apr 30<sup>th</sup>** - Ice fishing, Snow shoeing, Cross country skiing, Tobogganing & open sleigh rides, Snowmobiling, Igloo building

### **How do I get to Yellow Dog Lodge?**

**SUMMER:** The trip to the Yellow God Lodge begins in Yellowknife. As there are no roads to the lodge, the only way to visit in summer is by a float plane. The resort is located 55kms by air over rough terrain, water & swamps and takes around 20 mins from yellow knife

**WINTER & EARLY SPRING:** Special arrangements can be made to travel by snow machine or UTV transport with a guide who knows the route. It takes about 3.5 hours one way over 80kms of trail

### **What are the luggage and weight restrictions on the chartered airplane?**

The charter aircrafts or Bush planes are small and cannot carry a great deal of luggage. Therefore, it is requested to restrict personal gear to 20kgs/50 lbs or less. The size of the luggage should also be reasonable, oversized luggage maybe be left behind or incur additional air charter fees. Oversized luggage such as a fishing rod can get broken, so please select gear with that in mind. A variety of rods & tackles are available at the lodge.

Weather conditions can delay flight departures, since weather conditions are beyond our control while we would do our utmost to accommodate the guests however, we would not be responsible for any additional charges that would be incurred.

### **Do you rent clothing?**

Yellow dog resort does not offer winter clothing for rent.

My backYardtours has a great rental selection of winter parkas, snow pants, boots, mitts and hats. They will deliver to the charter airport or to the hotel. You may find their website here- <https://mybackyardtours.com/clothing-rentals/>

Temperature and wind conditions can vary greatly so be prepared and carry good quality warm clothing and protection.

2074 Steeles Avenue E, Unit 1 & 2, Brampton, ON, Canada, L6T 4Z9

Phone: +1 416 425 8001 | E-mail: [sales@dmci.ca](mailto:sales@dmci.ca)

[www.dmci.ca](http://www.dmci.ca)

### **What are the bugs like?**

During June and the first part of July the mosquitoes are at their height, but thin out by 15<sup>th</sup> July. If you're on the water bugs are not an issue. so with an appropriate insect repellent or a good bug hat/jacket your trip will be enjoyable

Black fly season are from late august to mid September, sunrise and sunset and after and before the rains are the most active times.

Horse and deer flies are out during mid summer when the temperature is at its warmest and the wind is calm.

Bring a good 'deep woods' bug repellent and a bug jacket & hat for those hikes in the woods. The lodge has plenty of bug hats and jackets for those evenings you want to take a hike in the backwoods for those fabulous pictures of the lodge.

### **Do we sell fishing licence?**

We sell Northwest licences at the lodge. If you are between the ages of 16 – 65 years you must carry an NWT licence with you every time you go fishing. Fees are applicable.

### **Is it mandatory to present Service Vouchers received from DMCi for availing confirmed services during our tour, including hotel accommodations and tours?**

Yes, it is mandatory. To avail of the services confirmed for your tour, including hotel accommodations and tours, you must present a digital or printed copy of the Service Voucher provided to you by DMCi or your travel agent at the time-of-service confirmation. Failure to present this voucher may result in denial of services. Please note that in such circumstances, no refunds, substitutions, or alternative tours or services will be provided.

**Do clients need a Credit Card for Hotel Check-Ins?** It is mandatory for clients to provide a credit card under their name when checking in at hotels, lodges, and inns. The hotel typically places an authorization hold of \$500 to \$750 on the card for incidental expenses and possible damage. This hold is released within 72 hours after check-out, deducting any incurred charges.

**Can we use Cash or a Debit Card instead of a Credit Card at Hotel Properties?** It is important to note that most of our hotel properties do not accept cash or debit cards as a substitute for a credit card. Guests are strongly advised to ensure they have a valid credit card available for use during their stay.

**Do guests need to provide a Photo-ID during Hotel Check-In?** Absolutely yes. At the time of check-in, clients are required to present a government-issued photo-ID, such as a passport or driver's license. Please be aware that other forms of government-issued photo-IDs, like a Social Insurance Number card, health card, citizenship card, etc., may not be acceptable.



**What is the policy in case your client's flight gets cancelled or delayed, or if they are unable to travel and join the tour for other reasons?** – DMCi Inc., our service providers, employees, contractors & sub-contractors etc. are responsible only for services booked through us. Therefore, your client's inability to travel or join the tour on time due any reasons including but not limited to delayed/cancelled flights, denied boarding, delayed/cancelled visas, refused admission into the country at the point of entry, health conditions, death in the family, etc. are not reasons for a refund or a substitution tour. If your client/s are unable to join the tour or fail to join the tour on time, no refund/substitution tour will be provided. DMCi Inc. is not responsible for any disruptions caused because of weather, traffic, road conditions, etc. All such circumstances should be covered by their Travel Insurance.

### **Restrictions related to this tour/soft adventure activity:**

**Please note the following terms & conditions and restrictions apply to participants undertaking this tour:**

Medical/Physical, Mobility Issues: This tour/soft adventure is not recommended for persons with heart or back condition, mobility issues, pregnant women, etc. Please let us know of any physical/health condition that you may have so we can confirm your acceptance on this tour/soft adventure.

Experience: No prior experience is required as such. You will be given proper briefing before start of this tour.

Dress Code, Helmets, etc.: There are strict dress code guidelines that must be followed for safety purposes. These specific requirements will be communicated to you at the time your tour is confirmed.

Waiver: In most cases, signing a Waiver is required. Your tour/soft adventure includes components that is considered as a soft adventure activity, and therefore you to required to sign a Liability Waiver issued by the operator of that tour or soft adventure activity. This requirement will be clearly indicated at the time of booking and on your tour voucher. Additionally, for all participants under the age of 18, a parent or legal guardian must sign the Waiver on their behalf.

### **General Notes:**

- a) Air charter flights are provided by a 3<sup>rd</sup> party contractor.
- b) This is a pet friendly resort.
- c) Tipping and gratuities are not included.
- d) Group discounts are available. Ask for details.
- e) Full bar services – soda pops, bottled water, beer, wine, spirits & munchies are available for purchase.
- f) Aurora Borealis are spectacular to experience but as a natural phenomenon, its appearance cannot be guaranteed.
- g) All wildlife should be considered unpredictable and potentially dangerous. If a large predator is visible but not close alter your route and move away from the area. If a black bear approach do not run, remain calm face the bear and slowly back away.

2074 Steeles Avenue E, Unit 1 & 2, Brampton, ON, Canada, L6T 4Z9

Phone: +1 416 425 8001 | E-mail: [sales@dmci.ca](mailto:sales@dmci.ca)

[www.dmci.ca](http://www.dmci.ca)

## Activity & Soft Adventure - Canada



- h) Yellow Dog Lodge accepts: Visa, Mastercard, AMX, Union Pay, Interact, and email banking.
- i) Pricing can fluctuate with exchange rates

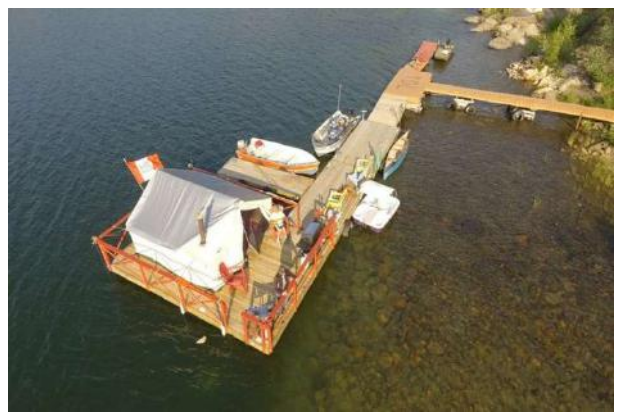
**For More Information on this Tour Package, Operating Dates & Tariffs,**

Contact our Destination Specialist @

Email: [sales@dmci.ca](mailto:sales@dmci.ca)

Phone: +1 (416) 425 8001 extn 1

[www.dmci.ca](http://www.dmci.ca)



2074 Steeles Avenue E, Unit 1 & 2, Brampton, ON, Canada, L6T 4Z9

Phone: +1 416 425 8001 | E-mail: [sales@dmci.ca](mailto:sales@dmci.ca)

[www.dmci.ca](http://www.dmci.ca)

