

Glacier to Waterton: Iconic Self-Drive Adventure

Explore the Beauty of Glacier and Waterton’s Peaks and Valleys

9 Days | 8 Nights

Glacier National Park, MT, USA

Tour Operates: May to October

Tour Code: DM SD GLCWAT

This tour is fully customizable. Please check with us for more information.

Dive into an extraordinary adventure with this Glacier to Waterton: Iconic Self-Drive Adventure tour, where each day brings new landscapes, scenic drives, and iconic experiences, from Lake McDonald’s beauty to the historic charm of Prince of Wales Hotel. Embrace the thrill of exploration and capture memories that will last a lifetime.

Book now to secure your spot on this unforgettable journey!

Pricing offered on demand. Must book at least 12 months out.



Tour Highlights:

- **Experience Glacier to Waterton Iconic Self-Drive Adventure Tour: A Journey Beyond Borders**
- **Discover Glacier’s Splendor.**
- **Breathtaking Going-to-the-Sun Road Trip.**
- **Red Bus Heritage & Two Medicine Wonders.**
- **Cross the Border to Waterton, AB, Canada.**
- **Sail Waterton Lake.**
- **Explore Waterton at Your Own Pace.**

Call to Action: Ready for the ultimate road trip? Book your Glacier to Waterton Self-Drive Adventure today and unlock an unforgettable cross-border journey filled with freedom, awe, and wonder!

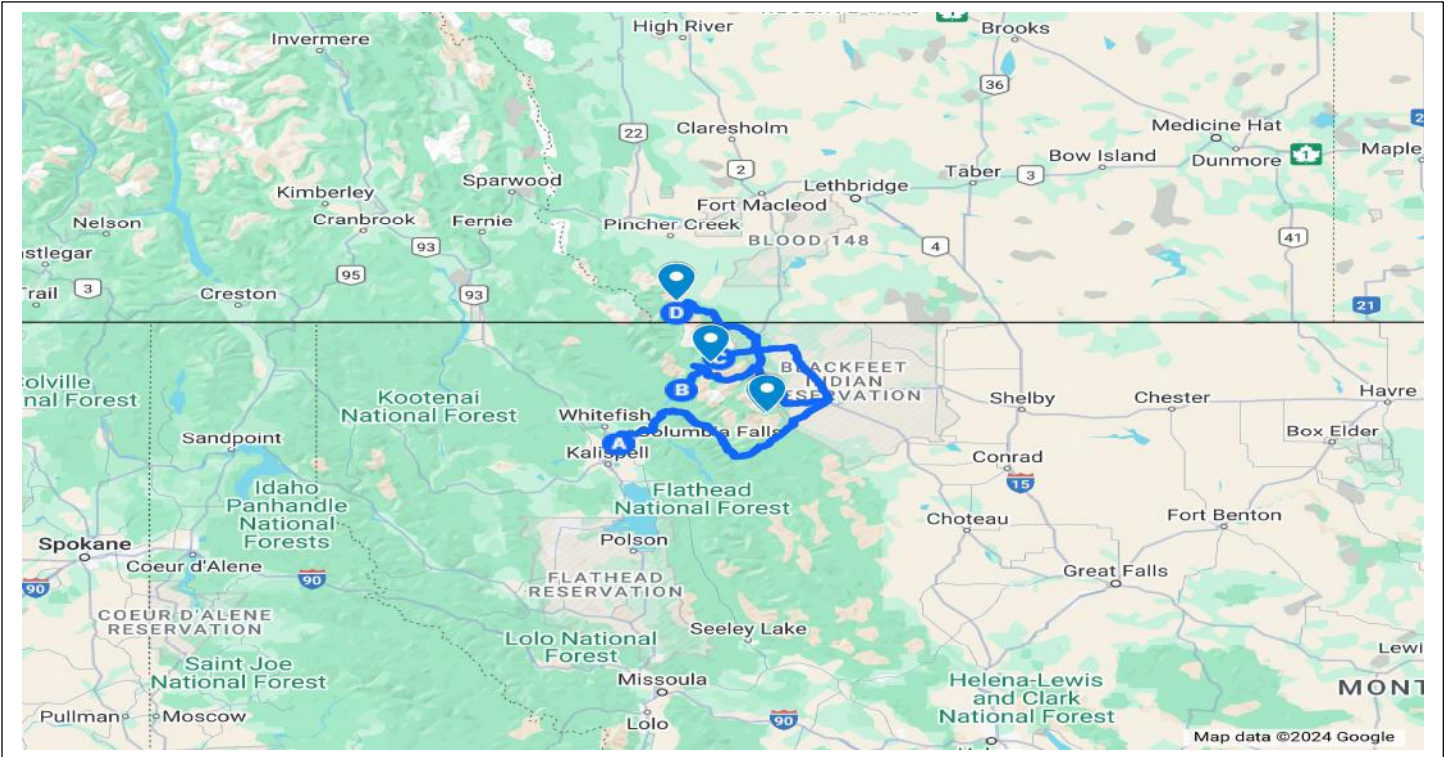
For enquiries, customized tour itineraries & bookings, please contact us at:

Phone: +1 416 425 8001
 E-mail: sales@dmci.ca
www.dmci.ca

Tour Inclusions:

- ✓ 8-nights’ accommodations.
- ✓ Lake McDonald Cruise.
- ✓ Glacier Park Red Bus Tour.
- ✓ Two Medicine Lake Boat Cruise.
- ✓ Waterton lake Cruise.
- ✓ Rental of mid-size SUV. Option to upgrade offered, Charges will apply.
- ✓ Unlimited Mileage.
- ✓ Rental Car Insurance (CDW/LDW). Minimum deductible applies. Please review FAQ.
- ✓ Taxes.

Map



Map Link: <https://www.google.com/maps/d/edit?mid=1tya4bdNW-rle0Bsfr0SgsFaEwzrY2pg&usp=sharing>

Day 1: Arrival

Driving Distance: 58 KM | 36 Miles

Welcome to Glacier National Park, where your journey into some of North America's most breathtaking landscapes begins! After collecting your bags, make your way to the car rental desk to pick up your pre-paid vehicle and get ready to experience the freedom of exploring Glacier and Waterton at your own pace. Today, visit the Apgar Visitor Center to gather essential tips, then stroll along the shores of Lake McDonald, marveling at its crystal-clear waters framed by towering mountains. Later, enjoy a guided boat tour, immersing yourself in the lake's scenic beauty. End this inspiring day with a delicious dinner and a cozy stay at Lake McDonald Lodge.

Overnight at Lake McDonald Lodge.

Day 2: Journey Through Glacier's Unforgettable Views

Highlights of the Day:

- Journey along the famous Going-to-the-Sun Road.
- Stop at scenic The Loop and Weeping Wall.
- Choose a hike to Hidden Lake or Highline Trail.
- Capture lasting memories at every viewpoint.

Take a drive along the famous Going-to-the-Sun Road, where every turn reveals Glacier National Park's beauty. Pause at scenic lookouts like The Loop and the Weeping Wall for perfect photo moments. At Logan Pass, explore trails to Hidden Lake or the Highline Trail, each unveiling nature's splendor. This journey promises unforgettable views and lasting memories in an extraordinary setting.

Overnight at Lake McDonald Lodge.

Day 3: Uncover Hidden Wonders in Two Medicine Valley

Highlights of the Day:

- Enjoy Glacier Park's iconic Red Bus Tour.
- Explore Two Medicine Valley with hiking or kayaking.
- Savor a delicious meal at The Whistle Stop.
- Unwind at the scenic Lake McDonald Lodge.

Experience the best of Glacier National Park on the famed Red Bus Tour, immersing in the park's scenic highlights and fascinating history. Follow a trip to Serene Two Medicine Valley for a refreshing hike or kayak outing. As the sun sets, savor a comforting dinner at The Whistle Stop Restaurant, then settle in for a peaceful evening at Lake McDonald Lodge, capturing the day's memories.

Overnight at Lake McDonald Lodge.

Day 4: Eastern Wonders & Many Glaciers Adventure

Driving Distance: 96 KM | 60 Miles

Highlights of the Day:

- Start with a scenic drive to St. Mary Center.
- Hike to beautiful St. Mary Falls for photos.
- Discover Many Glacier with a Grinnell Lake hike.
- Dine and relax at historic Many Glacier Hotel.

Discover Glacier's eastern gems, starting at St. Mary Visitor Center and continuing with a scenic hike to St. Mary Falls, ideal for stunning photos. In the afternoon, immerse in the tranquility of Many Glacier with a hike to Grinnell Lake. Savor a delicious dinner at The Ptarmigan Dining Room, then relax at the charming Many Glacier Hotel, capturing the day's beauty and serenity.

Overnight at Many Glacier Hotel

Day 5: Explore Two Medicine & Twin Falls Beauty

Highlights of the Day:

- Start with a boat tour at Two Medicine Lake.
- Discover stunning views on nearby hiking trails.
- Relish dinner at Luna's Restaurant.
- Relax overnight at Many Glacier Hotel.

Explore Two Medicine Lake in the afternoon with a scenic 3 PM boat tour, offering majestic views of mountains reflected in calm waters. Afterward, take a hike to Aster Park Overlook or the refreshing Twin Falls for unforgettable panoramas. End the day with a hearty dinner at Luna's Restaurant before resting at the historic Many Glacier Hotel, perfectly set for more discoveries.

Overnight at Many Glacier Hotel

Day 6: Cross to Waterton's Scenic Peace Park Wonders

Driving Distance: 82 KM | 51 Miles

Highlights of the Day:

- Follow a picturesque route to Waterton, AB.
- Discover Waterton Lakes, a UNESCO World Heritage Site.
- Spot wildlife and enjoy clear stargazing skies.
- Relax overnight in Waterton's charming, serene setting.

Departing Many Glacier Hotel, guests embark on a scenic drive north, entering Alberta via the Chief Mountain border and following Alberta Highway 6 through tranquil valleys. Arriving in Waterton, a UNESCO World Heritage Site, they can explore stunning landscapes with mountains, pristine lakes, and vibrant wildflowers. Overnight in Waterton, a peaceful town offering adventure, wildlife sightings, and stargazing opportunities.

Overnight at Waterton, AB.

Day 7: Borderline Beauty: Waterton Lake Cruise Adventure

Highlights of the Day:

- Cruise along Waterton Lake to the USA border.
- Spot wildlife and see the 49th parallel line.
- Hear fascinating stories from local guides.
- Enjoy a serene overnight stay in Waterton.

Enjoy a scenic 1-hour and 15-minute cruise on Waterton Lake, sailing to the Canada-USA border. Glide along the shoreline, spotting wildlife and marveling at the clear 49th parallel boundary. Engaging local commentary enriches the experience, bringing the landscape's history to life. No passports are needed for this non-landing journey. Conclude the day with a restful night in Waterton, surrounded by nature's tranquility.

Overnight at Waterton, AB.

Day 8: – Day Free in Waterton, AB

Things to see and do in Waterton, AB.

- **Waterton Lakes National Park:** Explore scenic landscapes, diverse wildlife, and beautiful lakes in this UNESCO World Heritage Site.
- **Hiking Trails - Bear's Hump Trail:** A short but steep hike offering panoramic views of the Waterton Valley.
- **Crypt Lake Trail:** An adventurous trail involving a boat ride, ladder climb, and a tunnel for experienced hikers.
- **Red Rock Canyon:** A family-friendly trail with vibrant red and green rock formations.
- **Waterton Lake:** Enjoy kayaking, canoeing, paddleboarding, or a scenic boat cruise on this crystal-clear lake.
- **Prince of Wales Hotel:** Visit this historic hotel with stunning views over the lake and surrounding mountains.
- **Wildlife Viewing:** Spot wildlife such as bears, deer, elk, mountain goats, and a variety of bird species.
- **Cameron Falls:** A picturesque waterfall located within walking distance from the town center.
- **Red Rock Parkway:** A scenic drive or bike ride through striking landscapes, leading to the Red Rock Canyon.
- **Stargazing:** Waterton is an excellent place for stargazing, thanks to its clear, dark skies.
- **Golfing at Waterton Lakes Golf Course:** Enjoy a round of golf at one of Canada's oldest and most scenic golf courses.
- **Shopping and Dining in Waterton Village:** Explore local boutiques, gift shops, and enjoy a meal at one of the charming restaurants or cafés.
- **Cultural Sites:** Visit historic sites like the Prince of Wales Hotel and local interpretive centers to learn about the region's indigenous heritage and natural history.

Waterton offers a perfect mix of adventure, relaxation, and scenic beauty for all types of travelers!

Overnight at Waterton, AB.

Day 9: End of Glacier to Waterton: Iconic Self-Drive Adventure Tour.

Driving Distance: 265 KM | 165 Miles

Today marks the end of your Glacier National Park adventure. After an unforgettable journey through stunning landscapes and memorable moments, make your way to the airport to return your rental car. We hope you carry home cherished memories and look forward to helping you discover more amazing destinations with DMCi Inc in the future!

End of your Glacier to Waterton: Iconic Self-Drive Adventure Tour.

Tour Exclusions:

- × Airfare. We offer airfares as an optional add-upon request.
- × Breakfast and other meals or ground transportation unless listed under inclusions.
- × Rental Car Insurance – Collision Damage/Loss Damage Waiver
- × Additional Driver Fees.
- × Additional insurance.
- × Roadside assistance.
- × Gas for the vehicle.
- × GPS. Racks, etc.
- × Child and Infant Seats. We recommend you bring your own child/infant seats.
- × Parking & Tolls.
- × Porterage at hotels.
- × Bottled Water in hotel rooms.
- × Travel Insurance is strongly recommended to all travelers. Travel Agents, please note - If your client chooses to decline your offer to sell them Travel Insurance, you must secure a signed Liability Waiver, as required by the TICO, the Provincial Travel Regulatory Authorities of Ontario, Canada. DMCi Inc. sells Travel Insurance to residents of Ontario who are Canadian citizens or landed immigrants (Permanent Residence Card Holders) only. Non-Canadians and non-residents of Ontario or international clients must purchase Travel Insurance in their respective province, state, or country of residence.
- × Visa and Documentation Fees.
- × Admissions (unless otherwise specified), ferries and snow-chains.
- × Telephone calls, Laundry, and other expenses.
- × Any personal expenses.
- × Resort Fees when applicable.
- × Gratuities for hotel staff (optional).

Hotels Featured

Destination	Hotel	Recommended Room Type
Lake McDonald	Lake McDonald Lodge	Lakeside room with king bed / shared balcony
Many Glacier	Many Glacier Hotel	Lakeside room with king bed / shared balcony
Waterton, AB	Kilmorey Lodge	King Standard Lake View

Rooms featured will be Standard ROH rooms unless specified otherwise. Hotels featured will be as above or similar. We feature a range of hotel properties. Hotel as well as Room upgrades are offered subject to availability and prevailing rates. Please check with us for rates and availability.

Vehicles Featured



We usually offer a medium-sized car or SUV for our self-drive vacations. Clients may choose to upgrade to higher category vehicles.

More information relating to the rental vehicle as well as terms & conditions of rental is available at our website www.dmci.ca.

Deposit & Payment Policy:

- 31-days or more prior to the start date of tour - \$250 per person.
- Full payment required 30 days prior to start date of your tour.

Change & Cancellation Policy:

- 31-days or more prior to start date of tour – refundable less \$100 per person.
- 30-days or less – 100% non-refundable.
- No Show – 100% non-refundable.
- Unused Services - non-refundable.

Refer to our website www.dmci.ca for

- Tariffs
- FAQ
- Terms & Conditions

For more information on this Tour, customization and pricing, please

[Contact our Destination Specialist @](#)

Email: sales@dmci.ca

Phone: +1 (416) 425 8001 extn 1

www.dmci.ca

Self-Drive Tours - USA





